



# GAT MONTHLY MEMBERSHIP PROGRESS REPORT

Results as of: 4/30/2024

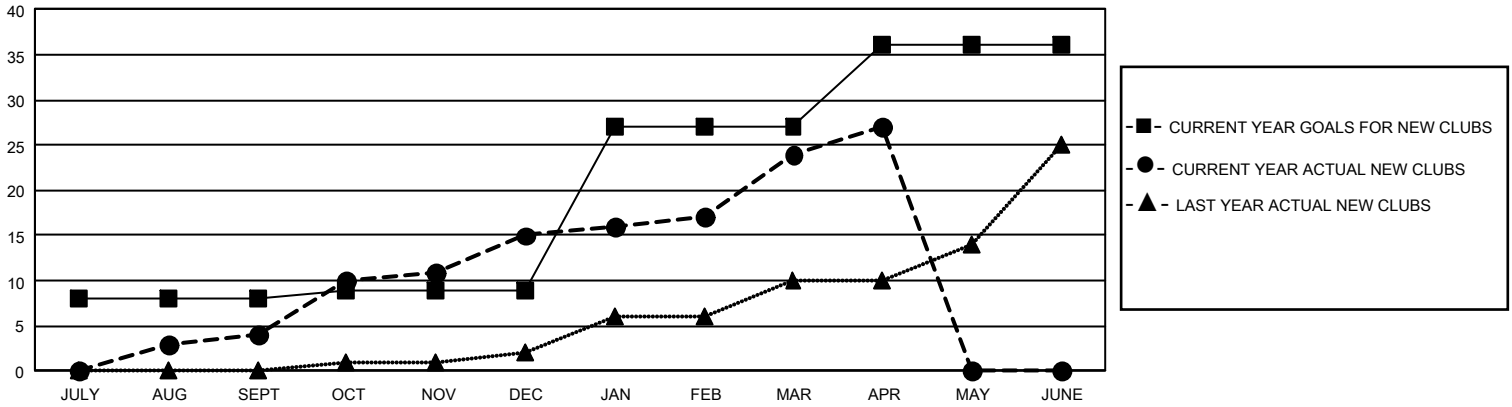
## GMT Constitutional Area 8, Group A

REPORT DOES NOT INCLUDE CLUBS IN UNDISTRICTED AREAS.

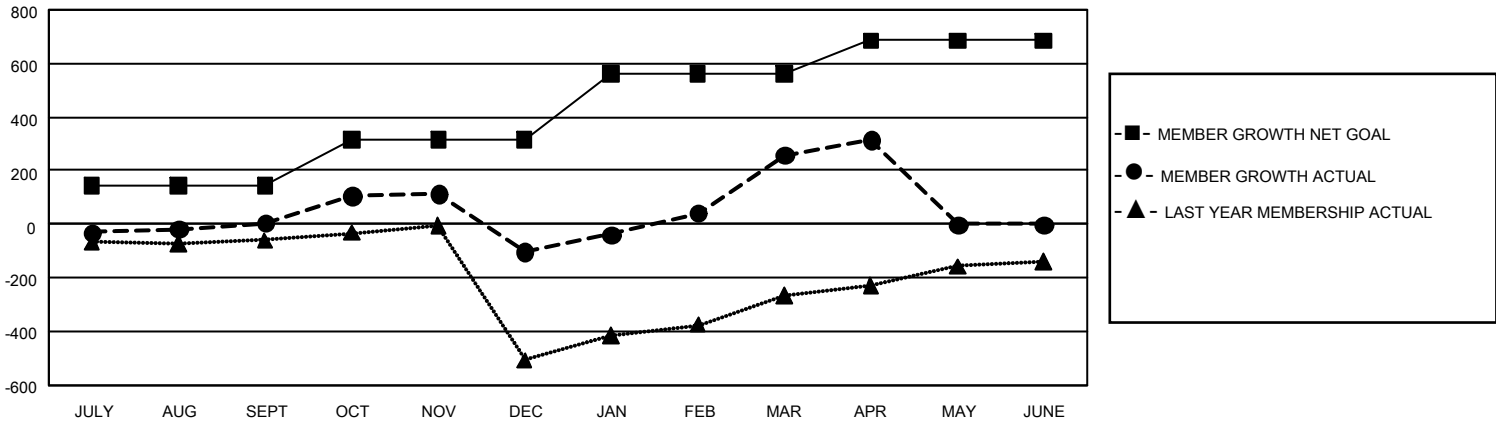
Clubs			
RESULTS FOR 2023-2024			
QUARTER	NEW CLUB GOAL	NEW CLUBS	DROPPED CLUBS
JULY/AUG/SEPT	24	4	3
OCT/NOV/DEC	3	11	8
JAN/FEB/MAR	54	9	0
APR/MAY/JUNE	27	3	0

Members			
RESULTS FOR 2023-2024			
QUARTER	MEMBER GROWTH NET GOAL	MEMBER GROWTH ACTUAL	DROPPED MEMBERS ACTUAL (including transfers)
JULY/AUG/SEPT	145	276	249
OCT/NOV/DEC	170	532	604
JAN/FEB/MAR	245	489	117
APR/MAY/JUNE	126	155	79

GOALS AND ACTUAL NEW CLUBS CUMULATIVE



GOALS AND ACTUAL MEMBERS CUMULATIVE



DROPPED CLUBS: 11	
<b>DROPPED MEMBERS</b>	
DECEASED	30
CLUB CANCELLED	172
OTHER	847
<b>TOTAL</b>	<b>1,049</b>

220 CLUBS OF 426 ADDED 1 OR MORE NEW MEMBERS

[CLICK HERE FOR CUMULATIVE MEMBERSHIP DATA](#)

GENDER DISTRIBUTION	
MALE	6,720 (70.06%)
FEMALE	2,869 (29.91%)
NON BINARY	0 (0.00%)
PREFER NOT TO ANSWER	3 (0.03%)
TOTAL FAMILY UNIT MEMBERS	195
FAMILY MEMBERS PAYING HALF DUES	106